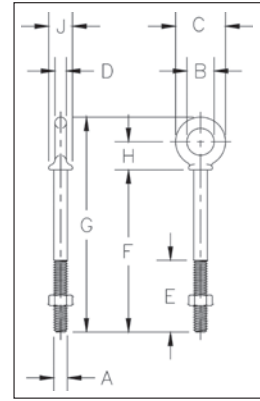


## Forged Eye Bolts



**G-277**  
Shoulder Nut  
Eye Bolts

- Forged Steel - Quenched and Tempered.
- Fatigue rated at 1-1/2 times the Working Load Limit at 20,000 cycles.
- Working Load Limits shown are for in-line pull. For angle loading, see page 200.
- Meets or exceeds all requirements of ASME B30.26 including identification, ductility, design factor, proof load and temperature requirements. Importantly, these bolts meet other critical performance requirements including fatigue life, impact properties and material traceability, not addressed by ASME B30.26.
- All Bolts Hot Dip galvanized after threading (UNC).
- Furnished with standard Hot Dip galvanized, heavy hex nuts.



**Fatigue Rated**



### G-277 Shoulder Nut Eye Bolts

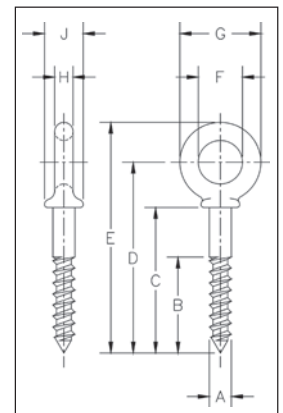
Shank Diameter & Length (in.)	G-277 Stock No.	Working Load Limit (lbs.)*	Weight Per 100 (lbs.)	Dimensions (in.)								
				A	B	C	D	E	F	G	H	J
3/8 x 4-1/2	1045112	1550	25.30	.38	.75	1.38	.31	2.50	4.50	5.97	.78	.66
1/2 x 3-1/4	1045130	2600	42.60	.50	1.00	1.75	.38	1.50	3.25	5.12	1.00	.91
1/2 x 6	1045158	2600	56.80	.50	1.00	1.75	.38	3.00	6.00	7.88	1.00	.91
5/8 x 4	1045176	5200	68.60	.62	1.25	2.25	.50	2.00	4.00	6.44	1.31	1.12
5/8 x 6	1045194	5200	102.40	.62	1.25	2.25	.50	3.00	6.00	8.44	1.31	1.12
3/4 x 4-1/2	1045210	7200	144.50	.75	1.50	2.75	.62	2.00	4.50	7.44	1.56	1.38
3/4 x 6	1045238	7200	167.50	.75	1.50	2.75	.62	3.00	6.00	8.94	1.56	1.38
7/8 x 5	1045256	10600	225.00	.88	1.75	3.25	.75	2.50	5.00	8.46	1.84	1.56
1 x 6	1045292	13300	366.30	1.00	2.00	3.75	.88	3.00	6.00	9.97	2.09	1.81
1 x 9	1045318	13300	422.50	1.00	2.00	3.75	.88	4.00	9.00	12.97	2.09	1.81
1-1/4 x 8	1045336	21000	650.00	1.25	2.50	4.50	1.00	4.00	8.00	12.72	2.47	2.28
1-1/4 x 12	1045354	21000	795.00	1.25	2.50	4.50	1.00	4.00	12.00	16.72	2.47	2.28
1-1/2 x 15	1045372	24000	1425.00	1.50	3.00	5.50	1.25	6.00	15.00	20.75	3.00	2.75

\*Ultimate Load is 5 times the Working Load Limit. Maximum Proof Load is 2 times the Working Load Limit.



**G-275**  
Screw Eye  
Bolts

- Forged Steel — Quenched and Tempered.
- Hot Dip galvanized.



### G-275 Screw Eye Bolts

Shank Dia. & Length (in.)	G-275 Stock No.	Weight Per 100 (lbs.)	Dimensions (in.)								
			A	B	C	D	E	F	G	H	J
1/4 x 2	1046111	4.30	.25	1.50	2.00	2.50	2.94	.50	.88	.19	.47
5/16 x 2-1/4	1046139	9.90	.31	1.69	2.25	2.94	3.50	.63	1.13	.25	.56
3/8 x 2-1/2	1046157	18.88	.38	1.88	2.50	3.28	3.97	.75	1.38	.31	.66
1/2 x 3-1/4	1046175	37.50	.50	2.44	3.25	4.25	5.12	1.00	1.75	.38	.91
5/8 x 4	1046193	85.50	.63	3.00	4.00	5.31	6.44	1.25	2.25	.50	1.12